

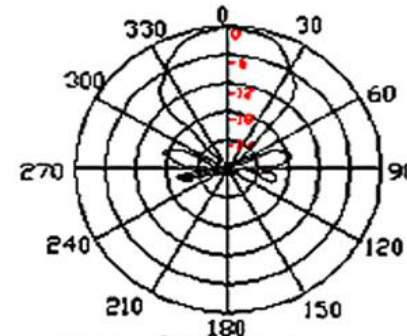
SPECIFICATION		
1	Model No.	EUS14F-40FS-BA
2	Construction	Water proof
3	Using method	dual
4	Nominal Frequency(HZ)	40K
5	Sensitivity (dB)	≥-74dBV/μMbar
6	S P L(dB)	≥95 (10V/30cm/sine wave)
7	Directivity	50deg
8	Capacitance(pF)	2000±25%@1KHz
9	Detectable range(M)	0.3...3
10	Operating Temperature(°C)	-20....+70
11	Housing material	Al
12	Weight(g)	1.5

THIS DOCUMENT CONTAINS DATE
 PROPRIETARY TO PROJECTS CHANGZHOU ESUNTECH
 CO LTD. ANY USE OR REPRODUCTION,IN ANY FORM,
 WITHOUT PRIOR WRITTEN PERMISSION OF
 PROJECTS CHANGZHOU ESUNTECH CO LTD
 IS PROHIBITED.
 ©2003,Project Changzhou Esuntech Co Ltd

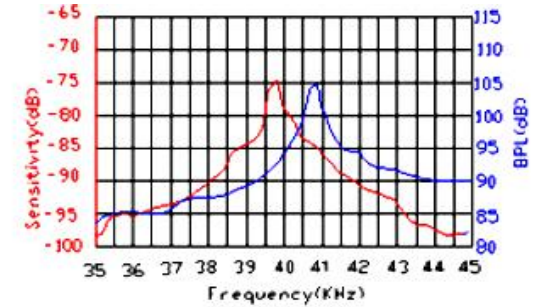
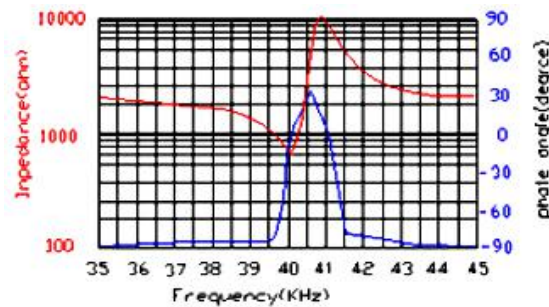
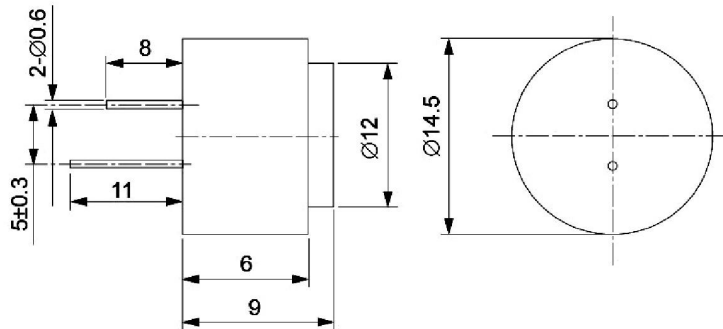
REVISION HISTORY			
LTR	DESCRIPTION	DATE	APPROVED
-	RELEASED FROM ENGINEERING	9/23/2003	Y M
A			
B			
C			




Beam Angle Tested at 40.0Khz
 frequency



Sensitivity/Sound Pressure Level
 Tested under 10Vrms@30cm



NOTES:
 1.ALL DIMENSIONS ARE IN MILLIMETERS
 2.SPECIFICATIONS SUBJECT TO CHANGE
 WITHOUT NOTICE

SIZE	Designed by	Date	Checked by	Date	Approved by	Date	Drawed date
	A4	 Changzhou Esuntech Co.,Ltd http://www.esuntech.com.cn			EUS14F-40FS-BA		
	Ultrasonic Sensor				Edition	Sheet	